

MX12B Accessories



MX12B Accessories: Aircraft Integration

Our aircraft accessories make it simple to integrate our leading avionics solutions.



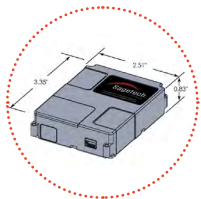
KIV-77 EMULATOR

PRODUCT NUMBER: 11-0244

Specs

Dimensions: 3.5in x 4.25in x 1in
Weight: <1lb

*ITAR controlled



KIV-79 EMULATOR

PRODUCT NUMBER: 11-0518

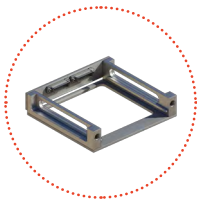
Specs

Dimensions: 3.3in x 2.5in x 0.83in
Weight: 170 grams

*ITAR controlled

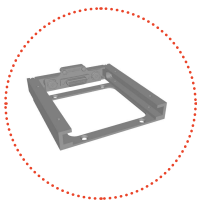
Key Features

- Compatible with multiple test sets including; IFF-45TS (Viavi), APM-424 (Viavi), and T-47/M5 (Tel Instruments)
- Key loading is not required
- Emulation of respective KIV device facilitates user testing without acquiring keys, key loader, or authentic KIV-77/79
- In its default state, the Sagotech KIV-77/79 Emulator will be configured to be in the fully operational state with encryption keys loaded. This allows for rapid testing of the MX12B transponder



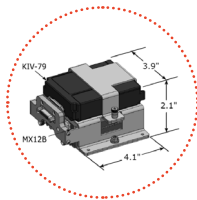
KIV-77 TRAY

PRODUCT NUMBER:
11-0351



KIV-79 TRAY

PRODUCT NUMBER: 11-0421



MICRO-IFF MX12B/KIV-79 STACKED TRAY

PRODUCT NUMBER:
11-0520

Overview

KIV trays provide a secure housing for KIV-77 and KIV-79 crypto computers or Sagotech KIV Emulators, allow for easy removal of the crypto computer if necessary, and provide convenient aircraft connections. The Micro-IFF tray provides a single mounting and interface for both the MX12B and KIV-79/79.

Key Features

Designed to fit KIV-77 and KIV-79 or similar AIMS 04-900(A) Option B crypto computers and Sagotech KIV Emulators, these accessories provide:

- Secure mounting of KIV to aircraft
- KIV-77 tray accommodates Raytheon and Leonardo crypto computers that do not have mounting holes
- Trays allow easy removal and replacement of crypto computers for COMSEC control
- Micro-IFF tray provides a single mounting solution for the entire IFF package of MX12B and KIV-79 crypto or emulator
- All trays provide convenient aircraft cable interfaces
- Standalone KIV trays provide interface conversion to robust Harwin connector, using the 11-0373 Standard Harness (sold separately)
- Stacked tray interfaces to aircraft via standard 25-pin Micro-D connector

Overview

Save time and money with the mission control software to command and control MX before/during flight.

Key Features

- Our platform provides data visualization of aircraft and can easily customize and program parameters for the number of aircraft the system will display
- Be up and running in 24 hours, no need to integrate software protocol onto your flight computer
- Hardware Health Monitoring



MISSION CONTROL GUI

PRODUCT NUMBER: 11-0285

Specs

Software for installation on ground control station

*ITAR controlled



STANDARD HARNESS

PRODUCT NUMBER: 11-0373

Specs

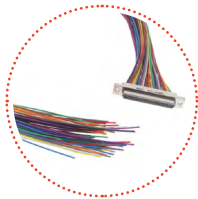
- DB9 Pin connector connects to Trig Avionics GPS Receiver
- DE15 Pin connector breaks out power ethernet 232 and critical discrete.
- Harwin Connector connects to Sagetech KIV tray
- Not shielded or designed to IPC standards

Overview

The MX12B Generic Harness connects to the MX12B 51-pin micro-D connector, and breaks out signals to a DB-9 RS232 connector for GPS signals, a connector to the KIV tray for crypto interface, and a high density DE-15 pin mil-std connector for the remaining I/O.

Key Features

- MX12B harness is designed to fast track the integration
- Simple design breaks out to three connectors



FLYING LEAD HARNESS TO BUILD YOUR OWN

PRODUCT NUMBER: 10-1529

Specs

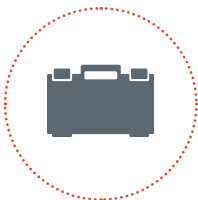
Customized to customer needs

Overview

Customers can design their own harness for integration and work alongside our team for development.

Key Features

- Design to IPC standards
- Custom development



ANTENNAS AND MOUNTING ACCESSORIES

Overview

Not a kit — all items sold separately.

- **Terminator Plug, SMA, 50 OHM** | Part # 50-000185 | Needed if transponder used with one antenna
- **Cable, Coaxial RG316, SMA-M to BNC-M RA, 24In** | Part # 10-0530
- **Antenna, Monopole, 1030-1090 MHz, BNC** | Part # 10-0395 | For full diversity, 2 antennas and 2 cables are required
- **MX Mounting Hardware Kit** | Part #11-0245

MX12B Accessories: Bench Integration

Our test box and accessories kit provide an easy integration onto your benchtop.



MX12B TEST BOX

PRODUCT NUMBER: 11-0235

*ITAR controlled

Overview

The Test Box provides a mounting surface for the MX12B, and a mounting slot for the Emulator or the Crypto Computer. Allows for connection to a computer to use the Mission Control GUI for configuration, test and operation. Test Box contains switches for discrete aircraft signals to ensure settings and integration operate properly.

Key Features

- Breaks out all discrete aircraft signals for testing
- Simple to connect with USB C cable or Ethernet



DC POWER SUPPLY KIT

PRODUCT NUMBER: 11-0246

Specs

Power Supply Kit to convert wall power 120VAC/60Hz to 24VDC.

Overview

Power supply for your MX12B test box.

- AC Power Adapter Cable, USA
- AC Adapter, 90-264 VAC to 24VDC, 60W
- Barrel Jack to Banana Plug Adapter

Key Features

- Eliminates need for bulky DC power supply
- Can interface directly with MX12B Test Box



BENCHTOP TEST KIT

PRODUCT NUMBER: 11-0248

Key Features

- All-in-one kit for test box
- Easy integration

Overview

Includes all required ancillary cables.

- Cable Assembly, RG55B/U, SMA-M To SMA-M, 12" | Qty: 2
- RF Termination, 50 OHM, 10W, SMA M | Qty: 2
- Terminator Plug, SMA, 50 OHM
- Cable, USB 3.2, A Male To C Male, 3FT, Reversible, Shielded
- Cable, Ethernet, M-M, CAT6, 10FT
- Cable, Banana, M-M, 36IN, Red
- Cable, Banana, M-M, 36IN, Black
- Straight SMA and right-angle BNC - 86.5"
- Monopole Antenna

(*) ITAR controlled: This product is controlled for export under the International Traffic in Arms Regulations (ITAR). A license from the U.S. Department of State is required prior to the export of this product from the United States.